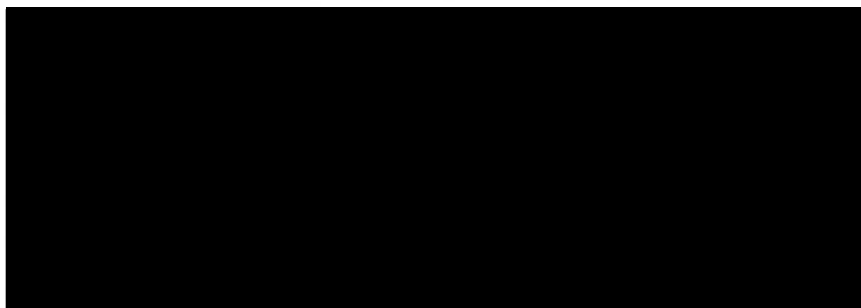


26 March 2021



**Re: Official Information Act request – Communication between MoH/Covid cases L, M, N and O**

I refer to your Official Information Act request dated 2 March 2021 to the MoH and transferred from the MoH to Auckland DHB on 9 March 2021 requesting the following information:

**Request details about the communications between the Ministry of Health and COVID-19 cases L, M, N, and O in the February 14 2021 cluster (Valentine's Day cluster).**

**Specifically, what messages/communications, and how many, were sent to these cases listed regarding self isolation before and after testing."**

Part of the communication, particularly in regards to before testing was conducted was delivered by the National Investigation and Tracing Centre. Therefore, this request has been partly transferred back to the Ministry of Health for a response.

I am responding from Auckland District Health Board (ADHB) as the DHB responsible for Auckland Regional Public Health Service (ARPHS).

ARPHS provides public health services to all three metro Auckland district health boards – Waitematā District Health Board, Counties Manukau Health and Auckland District Health Board, and the populations they serve. ARPHS' core role is to protect and promote public health.

Please find attached as annexure A, the summary of the communications with cases L, M, N and O. We have also included our COVID-19 Operations Standard Operating Procedure (SOP) as annexure B which details the symptom checking guidelines mentioned in annexure A. The letters to the Papatoetoe High School (PHS) families are included as annexure C, but only cases L and O are in a PHS family. M and N are not connected to the school.

You are entitled to seek a review of the response by the Ombudsman under section 28(3) of the Official Information Act. Information about how to make a complaint is available at [www.ombudsman.parliament.nz](http://www.ombudsman.parliament.nz) or freephone 0800 802 602.

Please note that this response, or an edited version of this response, may be published on the Auckland DHB website.

Yours faithfully



Ailsa Claire, OBE

**Chief Executive of Te Toka Tumai (Auckland District Health Board)**

## Annexure A

Request details about the communications between the Ministry of Health and COVID-19 cases L, M, N, and O in the February 14 2021 cluster (Valentine's Day cluster).

Specifically, what messages/communications, and how many, were sent to these cases listed regarding self-isolation before and after testing."

### CASE L- ARPHS:

- 23/02
  - o 1100hrs (Phone call) Advised of being a close contact of a covid-19 case as per 'close contact scoping and follow up' on page 13 of the enclosed 'Case and Contact Management Guidelines' WORKING DRAFT 3.4. Confirmed they were in isolation as of 1105hrs at home
  - o 1404hrs- (email) provided with standard fact sheet- 'information for close contacts of a confirmed case'
- 24/02
  - o 1110hrs (phone call)- Daily phone call for a symptom check as per 'Symptom Checking Procedure' on page 14 of the enclosed Case and contact management guidelines WORKING DRAFT 3.4 and confirmed contact had not left property in last 24 hours
- 25/02
  - o 0950hrs (Phone call) - Daily phone call for a symptom check as per 'Symptom Checking Procedure' on page 14 of the enclosed Case and contact management guidelines WORKING DRAFT 3.4 and confirmed contact had not left property in last 24 hours
- 26/02
  - o 0937hrs (Phone call)- Interview as a case. Isolation at MIQ discussed.
- 27/02
  - o 1134hrs (Phone call) - Daily phone call for a symptom check as per 'Symptom Checking Procedure' on page 14 of the enclosed Case and contact management guidelines WORKING DRAFT 3.4. Confirmed contact had been isolating in room since 23/02. Confirmed to continue to isolate in own room and confirmed contact had not left property in last 24 hours
- 28/02
  - o 1211hrs (Phone call) – Daily phone call for a symptom check as per 'Symptom Checking Procedure' on page 14 of the enclosed Case and contact management guidelines WORKING DRAFT 3.4 and confirmed contact had not left property in last 24 hours
- 01/03
  - o 1103hrs (Phone call) – Daily phone call for a symptom check as per 'Symptom Checking Procedure' on page 14 of the enclosed Case and contact management guidelines WORKING DRAFT 3.4 and confirmed contact had not left property in last 24 hours
- 02/03

## Annexure A

- 1132hrs (Phone call) – Daily phone call for a symptom check as per ‘Symptom Checking Procedure’ on page 14 of the enclosed Case and contact management guidelines WORKING DRAFT 3.4 and confirmed contact had not left property in last 24 hours
- 03/03
  - 1119hrs (Phone call) – Daily phone call for a symptom check as per ‘Symptom Checking Procedure’ on page 14 of the enclosed Case and contact management guidelines WORKING DRAFT 3.4 and confirmed contact had not left property in last 24 hours
- 04/03
  - 0943hrs (Phone call) – Daily phone call for a symptom check as per ‘Symptom Checking Procedure’ on page 14 of the enclosed Case and contact management guidelines WORKING DRAFT 3.4 and confirmed contact had not left property in last 24 hours
- 05/03
  - 1045hrs (Phone call) – Daily phone call for a symptom check as per ‘Symptom Checking Procedure’ on page 14 of the enclosed Case and contact management guidelines WORKING DRAFT 3.4 and confirmed contact had not left property in last 24 hours
- 06/03
  - 1117hrs (Phone call) – Daily phone call for a symptom check as per ‘Symptom Checking Procedure’ on page 14 of the enclosed Case and contact management guidelines WORKING DRAFT 3.4 and confirmed contact had not left property in last 24 hours
- 07/03
  - 1004hrs (Phone call) – Daily phone call for a symptom check as per ‘Symptom Checking Procedure’ on page 14 of the enclosed Case and contact management guidelines WORKING DRAFT 3.4 and confirmed contact had not left property in last 24 hours

### Case M- ARPHS:

- 27/02/21
  - 1343hrs (Phone call) – Case interview- Advised to isolate away from household pending transfer to MIQ.
  - Emailed at 1526- Provided with standard pdf version of fact sheet [‘information for people going from home to Jet Park’](#) fact sheet and guide to COVID -19 isolation and link to [‘for people with covid-19’](#)
- 28/02
  - 1014hrs Daily phone call for a symptom check as per ‘Symptom Checking Procedure’ on page 14 of the enclosed Case and contact management guidelines WORKING DRAFT 3.4 and confirmed contact had not left property in last 24 hours
- 01/03

## Annexure A

- 1030hrs: Daily phone call for a symptom check as per 'Symptom Checking Procedure' on page 14 of the enclosed Case and contact management guidelines WORKING DRAFT 3.4 and confirmed contact had not left property in last 24 hours
- 02/03
  - 1024hrs: Daily phone call for a symptom check as per 'Symptom Checking Procedure' on page 14 of the enclosed Case and contact management guidelines WORKING DRAFT 3.4 and confirmed contact had not left property in last 24 hours
- 03/03
  - 1051hrs: Daily phone call for a symptom check as per 'Symptom Checking Procedure' on page 14 of the enclosed Case and contact management guidelines WORKING DRAFT 3.4 and confirmed contact had not left property in last 24 hours
- 04/03
  - 1000hrs: Daily phone call for a symptom check as per 'Symptom Checking Procedure' on page 14 of the enclosed Case and contact management guidelines WORKING DRAFT 3.4 and confirmed contact had not left property in last 24 hours
- 05/03
  - 1133hrs: Daily phone call for a symptom check as per 'Symptom Checking Procedure' on page 14 of the enclosed Case and contact management guidelines WORKING DRAFT 3.4 and confirmed contact had not left property in last 24 hours

### Case N- ARPHS

- 27/02/21
  - 1609hrs (phone call)- Advised to isolate at home as a close contact of a covid-19 case as per 'close contact scoping and follow up' on page 13 of the enclosed 'Case and Contact Management Guidelines' WORKING DRAFT 3.4.
  - 2046hrs (Phone call) - Given guidance for isolation as a Covid case and advised of intent to transfer to MIQ facility to isolate.
- 28/02/21
  - 1027hrs (Phone call) re confirmed isolation requirements at MIQF
- 01/03
  - 1048hrs: Daily phone call for a symptom check as per 'Symptom Checking Procedure' on page 14 of the enclosed Case and contact management guidelines WORKING DRAFT 3.4 and confirmed contact had not left property in last 24 hours
- 02/03
  - 1034hrs: Daily phone call for a symptom check as per 'Symptom Checking Procedure' on page 14 of the enclosed Case and contact management guidelines WORKING DRAFT 3.4 and confirmed contact had not left property in last 24 hours
- 03/03
  - 1058hrs: Daily phone call for a symptom check as per 'Symptom Checking Procedure' on page 14 of the enclosed Case and contact management guidelines WORKING DRAFT 3.4 and confirmed contact had not left property in last 24 hours
- 04/03
  - 1008hrs: Daily phone call for a symptom check as per 'Symptom Checking Procedure' on page 14 of the enclosed Case and contact management guidelines WORKING DRAFT 3.4 and confirmed contact had not left property in last 24 hours

## Annexure A

- 05/03
  - o 1117hrs: Daily phone call for a symptom check as per 'Symptom Checking Procedure' on page 14 of the enclosed Case and contact management guidelines WORKING DRAFT 3.4 and confirmed contact had not left property in last 24 hours

### Case O- ARPHS

- 23/02/21
  - o 1257-(Phone call) - Advised pending swab result will influence isolation location. Provided with standard website links to ['Caring for yourself and others who have, or may have, COVID-19 at home'](#), ['What to expect and how to prepare: COVID-19 Asian and MELAA communities information pack'](#) and links to translated [covid-19 information](#).
- 24/02/21
  - o 0939hrs (phone call) - Daily phone call for a symptom check as per 'Symptom Checking Procedure' on page 14 of the enclosed Case and contact management guidelines WORKING DRAFT 3.4 and confirmed contact had not left property in last 24 hours
- 25/02/21
  - o 1000hrs (Phone call) – Daily phone call for a symptom check as per 'Symptom Checking Procedure' on page 14 of the enclosed Case and contact management guidelines WORKING DRAFT 3.4 and confirmed contact had not left property in last 24 hours
- 26/02/21
  - o 0950hrs (Phone call) – Daily phone call for a symptom check as per 'Symptom Checking Procedure' on page 14 of the enclosed Case and contact management guidelines WORKING DRAFT 3.4 and confirmed contact had not left property in last 24 hours
- 27/02/21
  - o 1124hrs (Phone call) – Daily phone call for a symptom check as per 'Symptom Checking Procedure' on page 14 of the enclosed Case and contact management guidelines WORKING DRAFT 3.4 and confirmed contact had not left property in last 24 hours
- 28/02/21
  - o 1116hrs (Phone call) – Confirmed contact had not left facility in last 24 hours
  - o 1644hrs (Phone call)- Confirmed isolation details at MIQ facility
  - o 1710hrs (email) - Translation of 'COVID 19 Information for people going from home to Jet Park' (PDF version) provided
- 01/03/21
  - o 0948hrs (Phone call) – Daily phone call for a symptom check as per 'Symptom Checking Procedure' on page 14 of the enclosed Case and contact management guidelines WORKING DRAFT 3.4 and confirmed contact had not left property in last 24 hours
- 02/03/21
  - o 0956hrs (Phone call) – Daily phone call for a symptom check as per 'Symptom Checking Procedure' on page 14 of the enclosed Case and contact management

## Annexure A

- guidelines WORKING DRAFT 3.4 and confirmed contact had not left property in last 24 hours
- 03/03/21
    - o 0902hrs (Phone call) – Daily phone call for a symptom check as per ‘Symptom Checking Procedure’ on page 14 of the enclosed Case and contact management guidelines WORKING DRAFT 3.4 and confirmed contact had not left property in last 24 hours
  - 04/03/21
    - o 0902hrs (Phone call) – Daily phone call for a symptom check as per ‘Symptom Checking Procedure’ on page 14 of the enclosed Case and contact management guidelines WORKING DRAFT 3.4 and confirmed contact had not left property in last 24 hours
  - 05/03/21
    - o 0903hrs (Phone call) – Daily phone call for a symptom check as per ‘Symptom Checking Procedure’ on page 14 of the enclosed Case and contact management guidelines WORKING DRAFT 3.4 and confirmed contact had not left property in last 24 hours
  - 06/03/21
    - o 1054hrs (Phone call) – Daily phone call for a symptom check as per ‘Symptom Checking Procedure’ on page 14 of the enclosed Case and contact management guidelines WORKING DRAFT 3.4 and confirmed contact had not left property in last 24 hours
  - 07/03/2021
    - o 1132hrs (Phone call) – Daily phone call for a symptom check as per ‘Symptom Checking Procedure’ on page 14 of the enclosed Case and contact management guidelines WORKING DRAFT 3.4 and confirmed contact had not left property in last 24 hours
  - 08/03/21
    - o 1154hrs (Phone call) – Daily phone call for a symptom check as per ‘Symptom Checking Procedure’ on page 14 of the enclosed Case and contact management guidelines WORKING DRAFT 3.4 and confirmed contact had not left property in last 24 hours
  - 09/03/21
    - o 1122hrs (Phone call) – Daily phone call for a symptom check as per ‘Symptom Checking Procedure’ on page 14 of the enclosed Case and contact management guidelines WORKING DRAFT 3.4 and confirmed contact had not left property in last 24 hours
  - 10/03/21
    - o 0952hrs (Phone call) – Confirmed case released from isolation.
    - o 1022hrs (email) - Provided clearance from isolation letter.





# COVID-19 Operations

## Standard Operating Procedure (SOP)

### Case and contact management guidelines

#### WORKING DRAFT 3.4

#### Table of Contents

|   |    |
|---|----|
| Document History.....   | 2  |
| Purpose.....  | 2  |
| Scope .....   | 3  |
| Related documents (available in the SOP Library) .....                          | 3  |
| Performance indicators .....  | 3  |
| Checklists for Case and Contact Management.....                                 | 3  |
| □ Case investigation .....  | 4  |
| □ Contact tracing.....  | 4  |
| Close contacts .....  | 5  |
| Casual + contacts .....   | 6  |
| Casual contacts (may self-identify through SHED).....                           | 6  |
| Daily case and contact follow up:.....  | 7  |
| CCM/Symptom Checking Team Roles and Responsibilities .....                      | 7  |
| Case interview/scope process .....  | 10 |
| Close contact scoping and follow up .....                                       | 13 |
| Second order Contacts .....   | 14 |
| Symptom Checking Procedure (refer to Figures 1 and 2 below).....                | 14 |
| Managing close contacts who develop symptoms (refer figure 3 and figure 4)..... | 19 |
| Contacts advanced to Confirmed/ Probable cases.....                             | 21 |
| Figure 5 Releasing Cases from isolation .....                                   | 23 |
| Releasing cases with persistent symptoms .....                                  | 23 |
| When and how to escalate an issue .....   | 26 |
| Glossary of terms.....  | 26 |

|               |  |             |                   |
|---------------|--|-------------|-------------------|
| Authored date | 15 February 2021                                   | Review date | 1 March 2021      |
| Owner         | COVID-19 clinical lead COVID response unit manager | Version     | Working Draft 3.4 |

# COVID-19 Operations

## Standard Operating Procedure (SOP)

### Document History

| Version  | Author/ Reviewer  | Notes   |
|--|---|---|
| 15 February 2021<br>(Working Draft 3.4)            | Martin Dawe   | Corrected document history and links to key other documents   |
| 15 January 2021<br>(Working Draft 3.3)             | Hilary Baird  |   |
| 18 December 2020<br>(Working Draft 3.2)            | Hilary Baird  | Updated to include NCTS advice about entering Second order contacts and new Ministry of Health guidance on contact categories   |
| 11 December 2020<br>(Working Draft 3.1)            | Hilary Baird  | Updated to include details about managing second order contacts   |
| 26 November 2020<br>(Working Draft 3.0)            | Tayla-Rose Newlyn/<br>Angela Matson /Denise Barnfather/Annette Nesdale/Pae Ora/Hilary Baird | Updated to incorporate NCTS processes and Pae Ora feedback, clinically reviewed by Annette Nesdale and Angela Matson (7 October 2020) then subsequently again by Angela Matson and Denise Barnfather, final team review by Hilary Baird |
| 8 July 2020<br>(Working Draft 2.4)                 | Hilary Baird  | Updated and incorporated separate symptom checking SOPs   |
| May to June 2020<br>(various drafts not published) | Hilary Baird/Julia Peters   | Development of general case and contact management SOP  |

### Purpose

To outline the end to end process for case and contact management (CCM) teams and symptom checking teams (if stood up) to manage a case and their contacts.

Authored date

15 February 2021

Review date

1 March 2021

Owner

COVID-19 clinical lead COVID response unit manager

Version

Working Draft 3.4

# COVID-19 Operations

## Standard Operating Procedure (SOP)

### Scope

This SOP details the assessment/interview/scope and symptom checking phases of COVID-19 case and contact management, including roles and responsibilities of team members, timeline and communication.

### Related documents (available in the [SOP Library](#))

- [Quick Guide to case and contact management \(under review\)](#)
- [ARPHS Contact Management Pathways](#)
- [Informing GPs of confirmed or probable cases SOP](#)
- [Ministry of Health, Guidance on contact categories and their management](#)
- [Privacy of Health Information SOP](#)
- [Referrals for welfare and cultural support SOP \[Manaaki/support – name to be updated\]](#)
- [Encouraging people to isolate or quarantine at Jet Park SOP including community exemptions](#)
- [Cluster management SOP \(under review\)](#)
- [Pae Ora different Tasklists and Job Descriptions \(in the \[Pae Ora Workforce Planning folder\]\(#\)\)](#) □  
[NCTS training material](#)

### Performance indicators

- Interview/scoping of cases should occur within **24 hours** of notification. Scoping should be undertaken within business hours, unless required in exceptional circumstances as directed by operations team. Examples include first community case, an apparently new cluster, managed isolation facility staff, or a new case in a high risk setting such as ARC, healthcare, education etc.
- Cases identified as Māori should be interviewed/ scoped by a Māori nurse/HPO within the CCM team where possible. If this is not possible scoping should be supported by the Pae Ora team.
- Household close contacts/whānau unit) should also be contacted within **24 hours** of being identified by the case
- Non-household close contacts should be contacted within **48 hours** of being identified by the case
- All contacts (e.g. close, casual + and secondary) should be identified, contacted and quarantined within **48 hours**
- ARPHS will delegate identified close contacts to the NITC and other PHUs within **48 hours** after discussion with Team SMO.

### Checklists for Case and Contact Management

Checklists are outlined for the following three tasks:

|                 |  |             |                   |
|-----------------|--|-------------|-------------------|
| Authorised date | 15 February 2021                                   | Review date | 1 March 2021      |
| Owner           | COVID-19 clinical lead COVID response unit manager | Version     | Working Draft 3.4 |

# COVID-19 Operations

## Standard Operating Procedure (SOP)

- Case investigation
- Contact tracing
- Daily case and contact follow up

### Case investigation

- COVID-19 contact tracing case record assigned by team Lead SMO/Lead PHN to a team member to interview/scope by changing the 'owner' in NCTS to team member (name)
- Case ethnicity and preferred language confirmed first and interpreter/ cultural team involved as appropriate.
- Interview/scope to identify source and close contacts undertaken using the interview/scope form and timeline provided by the SSOs.
- Quarantine, cultural and Manaaki/support issues addressed, referrals made to appropriate team (i.e. Manaaki/support, Pacific, Pae Ora).
- Interview/scope discussed with Lead SMO and Lead PHN.
- Discuss any red flag symptoms and significant health conditions that may place the case at more risk of developing severe illness (>70yrs old with health condition, immune compromised, pregnancy in third trimester).
- Escalate to operations if following 'red flags' are present: travel outside of Auckland during infectious period, healthcare worker, ARC worker/ resident, MIQF worker, worker at a transitional facility for imported frozen foods, corrections staff, any other occupation with vulnerable/institutionalised contacts.
- Transfer to Jet Park arranged or exemption application initiated.
- Exclusion letter and COVID-19 factsheet emailed to case, email saved in NCTS file.
- NCTS COVID contact tracing case documentation:
  - Use the Inform Q & A to enter information from the case interview form
  - Check that all fields in the COVID Case on the left have been correctly entered; review, edit as required
  - Notes written in NCTS (titled "interview/scope note") using 'interview/scope note template'
  - Advance to follow up
  - 'Team Managed by' field completed (e.g. Team 1) so that case appears on team NCTS dashboard.
- Exposure event/s created and if applicable, delegated to NITC after discussion with Lead SMO

# COVID-19 Operations

## Standard Operating Procedure (SOP)

- The Pae Ora/Pacific team lead clinical advisor is consulted with when clusters with Māori or Pacific communities are identified.
- Notify GP

### Contact tracing

- CCM team and SMO Ops lead determine contact classification for each exposure event as per the [Contact Management pathways flowchart](#) and Contact Categories and the Ministry of Health, [Guidance on contact categories and their management](#) – this document is provisional guidance and pending final guidance from the Ministry of Health.

### Close contacts

- Close contacts entered into exposure event in NCTS, SSOs are available to assist CCM team members.
- Lead PHN assigns close contacts to CCM team members to be interviewed/scoped using the '[Close Contact Q & A](#)' in NCTS.
- Quarantine, cultural and Manaaki/support needs addressed.
- Exclusion letter and Information leaflet for contacts of COVID-19 emailed to close contact (or referred to ARPHS website). Email saved in NCTS file.
- Escalate to operations any close and casual plus contacts with red flags including: healthcare worker, ARC worker/ resident, MIQF worker, worker at a transitional facility for imported frozen foods, corrections staff, and any other occupation with vulnerable/ institutionalised contacts.
- Notify DHB Occupational health SPOC if close contact is DHB staff member (see DHB staff member as case SOP for SPOC details in [the SOP library](#)).
- SMO Team lead in conjunction with SMO Ops lead to decide if close contacts are higher risk and thus CLOSE CONTACTS PLUS
- Household members of CLOSE CONTACTS PLUS are considered Second Order contacts and entered into NCTS and asked to isolate until released by ARPHS
- If the close contact is symptomatic, in discussion with the SMO lead, a short scope may be undertaken to identify any potential high risk exposure events, including travel outside the Auckland region in the potential infectious period.
- Discuss any red flag symptoms and significant health conditions that may put the contact at more risk of developing severe illness (>70yrs old with health condition, immune compromised, pregnancy in third trimester, obesity, smoking etc.).

|                 |  |             |                   |
|-----------------|--|-------------|-------------------|
| Authorised date | 15 February 2021                                   | Review date | 1 March 2021      |
| Owner           | COVID-19 clinical lead COVID response unit manager | Version     | Working Draft 3.4 |

# COVID-19 Operations

## Standard Operating Procedure (SOP)

- Second order contacts (household members of close plus contacts) are also quarantined (see Ministry of Health, [Guidance on contact categories and their management](#) for details). Their details including full name, date of birth, occupation and contact details are recorded in the second order contacts file the close contact follow up record. If the secondary contact is a HCW, they should inform their employer or occupational health provider of this. N.B. the DHB occupational health teams would like notified by ARPHS of second order contacts.

### Casual + contacts

- Casual + contacts are entered into an exposure event in NCTS by SSOs or NCCS.
- Casual + contacts contacted, interviewed/scoped and emailed factsheet and exclusion letter.
- Quarantine, cultural and Manaaki/support issues addressed.
- Request day 5 from first exposure test.
- Casual + contacts' household members do not need to quarantine regardless of occupation (see Ministry of Health, [Guidance on contact categories and their management](#)).

### Casual contacts (may self-identify through SHED)

- Provide with written information (or web link, see below) about the disease
- Ask to self-monitor for COVID-19 symptoms for 14 days
- Advise to get a COVID-19 PCR test if symptoms develop within 14 days, isolate until PCR test negative. Advised to wear a mask when seeking urgent care.
- Provide with a surveillance testing code for their exposure event, if available.

|               |  |             |                   |
|---------------|--|-------------|-------------------|
| Authored date | 15 February 2021                                   | Review date | 1 March 2021      |
| Owner         | COVID-19 clinical lead COVID response unit manager | Version     | Working Draft 3.4 |

# COVID-19 Operations

## Standard Operating Procedure (SOP)

### Daily case and contact follow up:

- Daily check in completed for all casual plus, close contacts, and cases managed by ARPHS.
- Testing arranged if required
- Manaaki/support needs addressed
- Report any new or worsening symptoms to SMO lead
- Inform SSOs if symptomatic close contacts become cases or cases under investigation are classified not a case
- Close contacts and cases requiring review for clearance are identified by Lead PHN
- Team Lead SMO reviews cases prior to release in conjunction with symptom checker
- Lead PHN reviews close contacts prior to release in conjunction with symptom checker
- Symptom checker provides clearance letters to cases and close contacts
- ARPHS Jet Park Liaison is notified by Lead PHN or Lead SMO of any upcoming releases
- SMO completes release wizard and writes a review note for cases on release
- Lead PHN completes release wizard and writes a review note for close contacts on release
- Inform SSOs promptly when the case recovers so EpiSurv can be updated
- Inform SSOs promptly if a case is hospitalised or released from hospital so EpiSurv can be updated

### CCM/Symptom Checking Team Roles and Responsibilities

#### Lead Senior Medical Officer (SMO)

- Oversees interview/scope of each new probable and confirmed case assigned to the team.
- Remains alert for cluster connections and high risk institutions/ red flags (and responsible for notifying ARPHS COVID-19 Ops team of same).
- Assists team lead/admin/intel to maintain up-to-date spread sheets and Visio diagram of case and contact links.
- Remains vigilant for contacts developing symptoms.
- Ensures referral of cases and contacts with worsening symptoms for clinical assessment as appropriate.
- Escalates questions and issues to ARPHS COVID-19 Ops team (clinical issues to SMO Operations Lead).
- Updates SSOs with case status of new cases, under investigation cases and hospitalised cases.
- Provides handover to incoming lead SMO.
- Maintains oversight and responsibility for liaising with places of interest/workplaces/healthcare facilities.

|                 |  |             |                   |
|-----------------|--|-------------|-------------------|
| Authorised date | 15 February 2021                                   | Review date | 1 March 2021      |
| Owner           | COVID-19 clinical lead COVID response unit manager | Version     | Working Draft 3.4 |

# COVID-19 Operations

## Standard Operating Procedure (SOP)

- Maintains oversight and responsibility for source finding, the management of cases and contacts requiring review for release from isolation, on-going/ new symptoms, and noncompliance.

### Team Lead PHN

- Assigns new probable and confirmed cases to the team members to interview/scope.
- Ensures Māori case management is guided by Pae Ora team member &/or using Pae Ora principles
- Assigns cases/ contacts to team members for symptom checking, ensuring continuity of care where possible.
- Ensures equitable workloads.
- Ensures accurate identification of infectious period onset, isolation and quarantine periods.
- Responds to questions and suggestions from team members.
- Troubleshoots emergent issues.
- Regularly audits files to ensure all fields are completed appropriately.
- Provides handover to incoming team lead PHN.
- Maintains oversight of symptom checking, Manaaki/support requests and completion of daily tasks. To liaise with Kaiāwhina responsible for maintaining oversight of Manaaki/support checks for Māori case/contacts.
- Maintains oversight of cases and close contacts requiring review for release from isolation, on-going/ new symptoms, and non-compliance. Ensure these are escalated to the lead SMO as required.
- Escalate uncontactable contacts/cases to ARPHS COVID-19 Ops team.

### Case and Contact Management team members

- Undertake case interview/scope as requested by team lead PHN.
- Investigate to identify links between cases within a cluster and source of COVID-19 infection.
- Organise case/contact transfer to managed isolation facilities.
- Liaise with and provide appropriate advice to cases and contacts.
- Undertake contact tracing.
- Manage and update case and contact information appropriately into NCTS.
- Identify and escalate issues to the team lead / lead SMO.
- Identify and manage quarantine, cultural and Manaaki/support issues in cases and contacts as per *Referrals for Manaaki/support and Cultural support SOP* in [the SOP library](#).
- Liaise with the Pae Ora and/or Pacific teams for Manaaki/support specific to Māori and/or Pacific case & contacts



# COVID-19 Operations

## Standard Operating Procedure (SOP)

- Completes assigned daily check ins for cases and contacts identifying any symptoms, Manaaki/ support needs and confirming that cases/contacts are remaining in isolation/quarantine.
- Reviews and manages assigned records on email survey follow up.
- Reports any new symptoms or Manaaki/support needs to the lead SMO and team lead PHN.
- Undertakes wellbeing checks as per *Referrals for Manaaki/support and Cultural Support SOP* in [the SOP library](#).
- Releases cases and contacts from isolation in discussion with lead SMO/team lead PHN.
- Escalates workload issues to team lead PHN.
- Always ensure adequate data entry into NCTS to a high standard so that new CCM team members could pick up a case/contact without a handover.

### Surveillance Support Officers (SSOs)

- Receives and processes EpiSurv and NCTS notifications.
- Enters and updates case and contact information and classification (i.e. probable/confirmed/hospitalised/recovered) into EpiSurv and NCTS.
- Updates case status (i.e. Under Investigation/Not a Case/Recovered) in EpiSurv.
- Locates alternative contact details for cases/contacts that are un-contactable (see *Gathering Contact Details for Cases and Contacts SOP* in [the SOP library](#)) or sends record to the finder's service.
- Assists with entering Event exposures and close contacts into NCTS.
- Closes cases in EpiSurv and NCTS.
- Identifies data quality issues and follows up with CCM team as required.
- Ensures that ethnicity data is collected

### In ARPHS Orange surge level or above

#### Symptom checking team members

- Completes assigned daily check in's for cases and contacts and identifies symptoms, Manaaki/ support needs and confirms that cases/contacts are remaining in isolation/quarantine.
- Reviews and manages assigned records on email survey follow up.
- Reports any new symptoms or Manaaki/support needs to the lead SMO and team lead PHN.
  - Records all information appropriately in NCTS.
- Undertakes wellbeing checks as per *Referrals for Manaaki/support and Cultural Support SOP* in [the SOP library](#).
- Releases cases and contacts from isolation in discussion with lead SMO/ team lead PHN.
  - Escalates workload issues to team lead PHN.

|                 |  |             |                   |
|-----------------|--|-------------|-------------------|
| Authorised date | 15 February 2021                                   | Review date | 1 March 2021      |
| Owner           | COVID-19 clinical lead COVID response unit manager | Version     | Working Draft 3.4 |

# COVID-19 Operations

## Standard Operating Procedure (SOP)

### Case interview/scope process

1. Cases are assigned by ARPHS Ops Team to a Case and Contact Management (CCM) team for interview/scope.
2. A Medical Officer (MO) or Public Health Nurse (PHN) from the CCM team calls the case's GP and informs them of the positive result (see *Informing GPs of confirmed or probable cases* SOP in [the SOP library](#)). GP information is obtained within NCTS by using the 'get enrolment' button which updates the 'circle of care' with GP details.
3. Team Lead allocates a team member to undertake the interview/scope. See [Quick guide to case and contact management](#) in the [Training Library](#) for scripts. Team lead ensures Māori case scoping is guided by Pae Ora team member &/or Pae Ora principles and Pacific case scoping guided by Pacific team. The COVID contact tracing record is assigned to the allocated team member and the DHB/ PHU staff field is completed with the interviewer/scoper's name. Where an interpreter is required, the CCM team member can make a booking with the [ADHB interpreter services](#). If on-going interpreter services are required, CCM team member escalate to Operations who will organise via the rostered interpreter liaison.
4. The team member checks to confirm positive result within NCTS. If results cannot be identified then team member reviews éclair or regional clinical portal. The team member calls the case and completes the following:
  - Introduces themselves and assesses any immediate need for cultural and/or language support
  - Informs them of positive result
  - Explains public health role and reason for the call
  - Reads the privacy statement
  - Completes the [Case Interview/scope Form and Timeline](#)
  - Discusses quarantine plan using scripts from [Quick guide](#) □ Provides public health advice and information packs as required.
5. Three critical public health tasks are required:
  - a. **Identify potential source(s) of infection** in the 14 days prior to symptom onset or positive test date (if asymptomatic). If source is not obvious (e.g. overseas travel, MIF worker), use checklist to specifically ask about potential exposures.
  - b. **Identify contacts at risk of infection.** Cases are asked to identify locations they have visited and people they have been in contact with in the 2 days prior to symptom

# COVID-19 Operations

## Standard Operating Procedure (SOP)

onset (or 2 days prior to date swabbed if asymptomatic) and throughout the time leading up to the interview/scope. Ask case to check their bank records for EFTPOS transactions, look at their diary/calendar/phone. Where the case has used the 'COVID tracer app' during their infectious period, they are asked to navigate to 'my profile' within their app and then select 'share my diary'. They should confirm their details and then the CCM team member should provide them with the 6 numbers from their EpiSurv number. Contact locations will then appear in their NCTS case record. The CCM team member should advise that ARPHS is likely to be in regular phone contact to confirm details of locations, and that these locations may be made public. In addition advise case to tell daily symptom checker if they remember additional events/contacts. Reassure case that it is common for people to think of additional events/people over next few days and the importance of letting ARPHS know.

- c. **Provide clear isolation advice and education**, and offer wellbeing and cultural support if required. For community cases, the team member in the first instance encourages voluntary compliance with entry into a quarantine facility for the period of their isolation (See *Encouraging cases and contacts to isolate/quarantine at Jet Park Quarantine Facility* in [the SOP library](#) for script – NOTE: currently under review).

The process is underpinned by informed consent. To support this voluntary approach, the Case and Contact Management team need to be mindful of the principles of health literacy<sup>[1]</sup> and may need to seek appropriate advice and support from the outset:

For Māori, involve (provide a heads-up for all/anyone that may be Māori) the Pae Ora Lead or Pae Ora Clinical Advisor by email [ARPHSPaeOra@adhb.govt.nz](mailto:ARPHSPaeOra@adhb.govt.nz) (ADHB) [ARPHSPaeOra@adhb.govt.nz](mailto:ARPHSPaeOra@adhb.govt.nz), cell: 021 568 539, or face to face in the Pae Ora team room on Level 1

For Pacific, involve the Pasifika Team Lead [ARPHS.PasifikaTeam@adhb.govt.nz](mailto:ARPHS.PasifikaTeam@adhb.govt.nz) and/or Pasifika CCM team members

The Case is emailed the factsheet for COVID-19 cases ([Factsheet for COVID-19 cases](#)) and a letter of exclusion for work (emailed as PDF).

- 6. The team member discusses the case interview/scope findings with the CCM team Lead SMO and/or Team Lead. The team member highlights any red flag symptoms that would

[1] Refer to <https://www.healthnavigator.org.nz/clinicians/h/health-literacy/> for an overview of health literacy.

|               |  |             |                   |
|---------------|--|-------------|-------------------|
| Authored date | 15 February 2021                                   | Review date | 1 March 2021      |
| Owner         | COVID-19 clinical lead COVID response unit manager | Version     | Working Draft 3.4 |

# COVID-19 Operations

## Standard Operating Procedure (SOP)

potentially signify the need for hospital admission, i.e. shortness of breath, on-going fever, chest pain, and confusion.

7. The team member completes the NCTS 'inform case Q and A' and uses the *Case interview/scope note template* provided in the [case and contact management toolkit](#) to enter a note within the COVID contact tracing case record. The team member confirms that all details have been entered correctly into the fields and that the case has been linked to the correct person profile based on the confirmed details in the interview/scope form and selects 'advance to follow up'. The team member uses the '*Case advance to follow up note*' template found in the [case and contact management toolkit](#) to enter a note. The team member saves any Manaaki/support request forms in the 'files' section.
8. The team member agrees on who will manage the exposure events with team leads. The team member creates exposure events using the following naming convention:
  - <Exposure Event Number> <Exposure Event Name> <Close Contacts or Casual Contacts> <Date>
  - E.g. EE-1234 New World Shift Close Contacts 10/8/2020, or, EE-2345 Ministry Hotel Casual Contacts 8/8/2020

CCM Team member includes in a 'note' details of the known contacts and documents if any contacts are unknown. The note should be titled 'identifying contacts'. The team member documents who will manage the exposure event and ensures the event details are adequately filled in. In situations where the same location is required to be entered multiple times (e.g. for multiple shifts worked) SSOs will 'clone' the first exposure event.

9. The Lead SMO identifies any potential outbreak and/or high risk institutions involved and/or any border workers, and escalates to Ops SMO/Ops Team lead and/or Ops Manager immediately. If Māori and/or Pacific communities identified within the cluster, SMO to discuss with Pae Ora and/or Pacific team lead SMO.
10. Close contacts are entered by CCM team with guidance from SSOs. SSOs review the identified close contact information within the exposure events. If close contacts contact information cannot be identified, CCM team member should refer to SSO for assistance who can send the close contact record to the finder's service if necessary. Once close contact details are identified they are returned back to the SSOs who will then re-assign back to the appropriate teams. The SSO scans and attaches the *Case Interview/scope Form and Timeline* to the COVID contact tracing case 'file' section.

# COVID-19 Operations

## Standard Operating Procedure (SOP)

### Close contact scoping and follow up

1. SMO Ops lead and SMO Team lead to decide for exposure events if close contacts are to be considered Close contacts or Close Contacts Plus depending on risk of the exposure setting.
  
2. For exposure events managed by ARPHS, the team members utilise support from Pae Ora and/Pacific teams where appropriate to phone each close contact and complete the following:
  - Introduces themselves and assesses any immediate need for and assesses any immediate need for cultural and/or language support.
  - Explains public health role and purpose of call to advise that they have been in contact with someone who has COVID-19 (See [Quick guide to case and contact management](#) in [the training library](#) for scripts).
  - Confirms demographic details, occupation and underlying conditions.
  - Identifies whether they have any symptoms consistent with Covid-19 and if they have any health history of note.
  - Interviews/scopes to gather information on the degree of contact they have had with the case (**only if the contact knows who they have been exposed to or the case has agreed for their name to be disclosed**)
  - Identifies and addresses Manaaki/support needs.
  - Advises on testing plan and anticipated swab due dates.
  - Advises of daily check ins throughout their quarantine period.
  - Provides quarantine advice and education. Household contacts are encouraged to quarantine at Jet Park (See [Encouraging cases and contacts to isolate/quarantine at Jet Park Quarantine Facility](#) in [the SOP library](#) for script).

**Note:** Confidentiality of the case is maintained unless consent to divulge case information is explicitly given by the case or guardian.

3. Notes are entered into NCTS for each close contact, titled 'Contact tracing interview/scope' using the template note found in the [case and contact management toolkit](#).

|               |  |             |                   |
|---------------|--|-------------|-------------------|
| Authored date | 15 February 2021                                   | Review date | 1 March 2021      |
| Owner         | COVID-19 clinical lead COVID response unit manager | Version     | Working Draft 3.4 |

# COVID-19 Operations

## Standard Operating Procedure (SOP)

4. Provide an exclusion letter for work/school, downloaded from the hub [case and contact management toolkit](#) and populated. Save and email as a PDF. Factsheet for close contacts is emailed ([factsheet for close contacts of COVID](#)). Save emails in NCTS files.
5. Contacts that have been interviewed/scoped and are considered casual contacts are provided with the [Factsheet for casual contacts](#) of COVID-19. A Note titled 'Casual contact: contact tracing interview/scope' is entered. The close contact record is closed due to 'casual contact contacted' and NOT advanced to follow up if deemed to be a casual contact.
  - Symptomatic casual contacts should be managed as per the [contact management pathways flowchart](#) and the Ministry of Health, [Guidance on contact categories and their management](#).
6. Team member organises testing of close contacts, where possible, 5 days after initial exposure to a COVID-19 case, and 12 days after the last exposure to the case while infectious. Where there has been a significant lapse in time between the day 5 and day 12 swab (i.e. a month), or in the event of multiple exposures to COVID-19 cases in a household, the day 5 swab should be offered to contacts again, from date of last known contact with a COVID case.

### Second order Contacts

- Second order contacts are household members of 'a Close contact Plus'.
- Second order contacts are asked to isolate until the close contact plus returns a negative day 5 test, or, if the close contact is moved out of the home, a negative test taken 48hrs after being separated from the household.
- Second order contacts details are collected from the close contact plus and entered into NCTS in the close contact follow up record.
- An initial call to the second order contact is made by the CCM team to explain the quarantine process, check for symptoms and Manaaki/support needs.
- CCM team member to provide exclusion letter as required (template found in [Case and contact management toolkit](#))
- No daily check in is required for second order contacts.
- Second order contacts are called by CCM team on the day before release due to advise regarding release and provide clearance letter if required.

### Symptom Checking Procedure (refer to Figures 1 and 2 below)

1. At the start of each day, the Team Lead /Lead SMO will run a team meeting to introduce any new staff, discuss process updates (logistical and/or clinical), provide teaching/coaching, discuss issues arising, and provide an overview of the work for the day.

# COVID-19 Operations

## Standard Operating Procedure (SOP)

2. The Team lead distributes the unassigned workload by assigning cases and contacts to be symptom checked from the 'follow up pending' or 'follow up assigned to me' lists under cases in NCTS. Where possible, household members should all be called by one team member. Households should stay with the team member until their last working day in the team. The team member should reassign all of their follow up records back to the Team Lead on their last working day in the team. The Team Lead can use the 'follow up pending' list and filter by team number to identify outstanding work if re-assignment is necessary.
  
3. Active close contacts and cases should have a 'daily check in' completed each day. CCM Team member to add a note with any pertinent information regarding symptoms or Manaaki/isolation concerns. Follow up can be completed by either phone or email. CCM team members should consider compliance and reliability of the case/contact prior to electing for email follow ups. The 'preferred contact method' must be populated with this decision.
  - **Those who are to be followed up via email** should receive a phone call, ideally, on day 4, day 8, Day 11 and day 14 of isolation. If new or worsening symptoms are identified, the preferred follow up method should be changed to 'phone'. Symptom checkers who are assigned email follow ups need to send a text reminder to outstanding follow up records by 12pm. All email follow ups that are outstanding by 2pm will require a phone call follow up to attempt same day contact. The assigned symptom checker must review email responses and escalate as necessary, including Manaaki/support referrals and ensure that they are aware of their swab schedule and confirm that swabs were taken on the required dates by checking Concerto or results in NCTS. Where swabs have not been taken, the symptom checker must contact them to inform.
  
  - **For daily phone check in**, it is best practice to speak to all adults in a household individually. A parent can report on their child's symptoms. Symptom checkers are to confirm that cases and contacts are remaining in isolation, are not having visitors to the home, and check for any Manaaki/support needs and make referrals as appropriate. See *Manaaki/ support referral SOP* in [the SOP library](#).
  
4. Unsuccessful contact attempts should be recorded in 'activity history' and 'log a call'. Text messages should be sent via outlook and saved in the follow up record 'files' (To: [mobile number]@mtxt.co.nz Subject: [Hi there, this is XXXXXXXX calling from Auckland Regional Public Health Service. Could you please call or reply when you are available. Thanks] 100 characters: text entry.) A case or contact that has had at least three unsuccessful contact attempts within a 24 hour period is deemed 'uncontactable'. Uncontactable cases and close contacts should have 'uncontactable' added into their 'team managed by field' (e.g. Uncontactable Team 2). Refer to figure 1 below.

|               |  |             |                   |
|---------------|--|-------------|-------------------|
| Authored date | 15 February 2021                                   | Review date | 1 March 2021      |
| Owner         | COVID-19 clinical lead COVID response unit manager | Version     | Working Draft 3.4 |

# COVID-19 Operations Standard Operating Procedure (SOP)



5. Symptomatic close contacts are managed as per the 'Managing close contacts who develop symptoms' section (below).

Authored date

15 February 2021

Review date

1 March 2021

Owner

COVID-19 clinical lead COVID  
response unit manager

Version

Working Draft 3.4



# COVID-19 Operations Standard Operating Procedure (SOP)

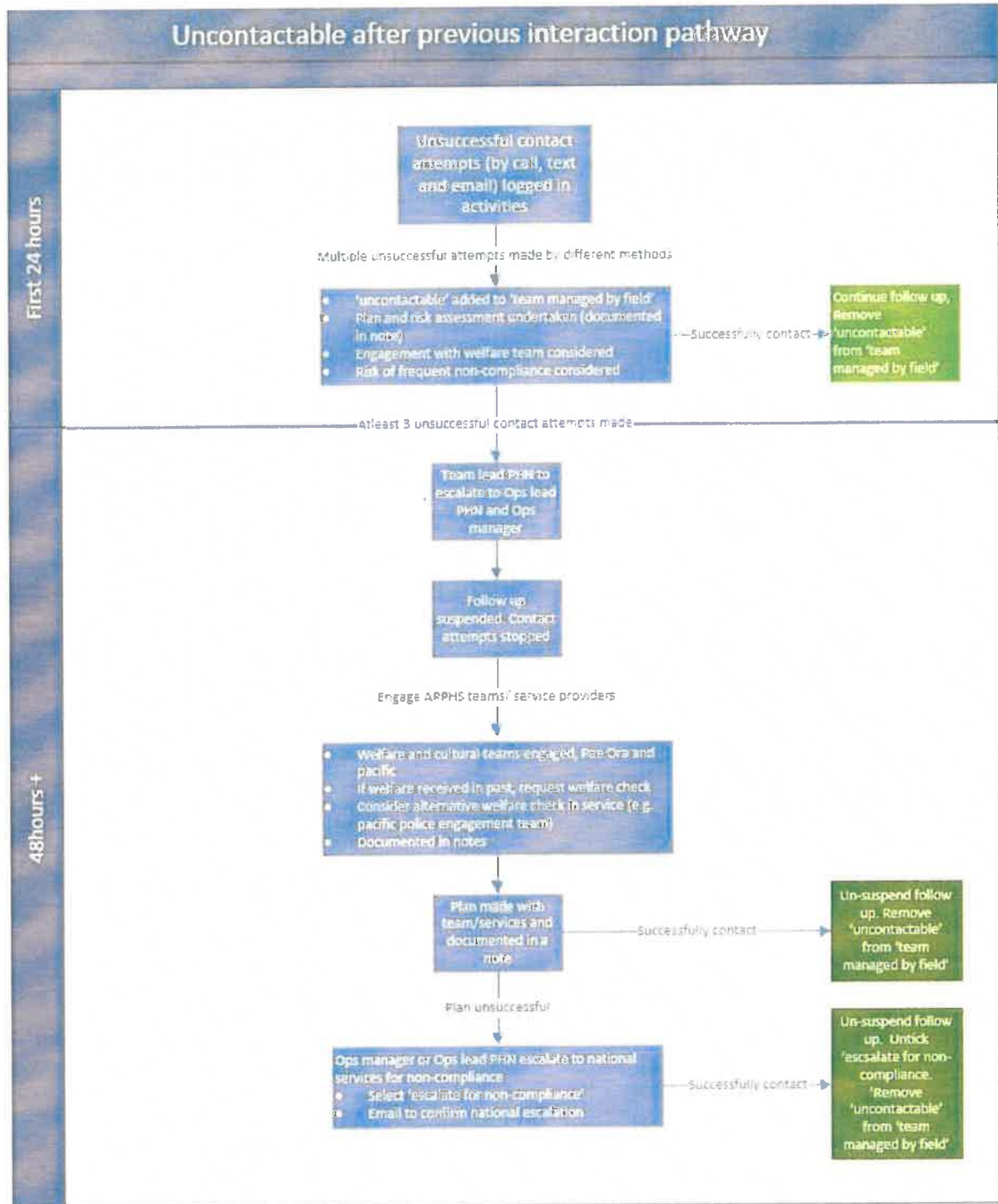


Figure 1. Uncontactable after previous successful contact attempts process

|               |  |             |                   |
|---------------|--|-------------|-------------------|
| Authored date | 15 February 2021                                   | Review date | 1 March 2021      |
| Owner         | COVID-19 clinical lead COVID response unit manager | Version     | Working Draft 3.4 |

# COVID-19 Operations

## Standard Operating Procedure (SOP)

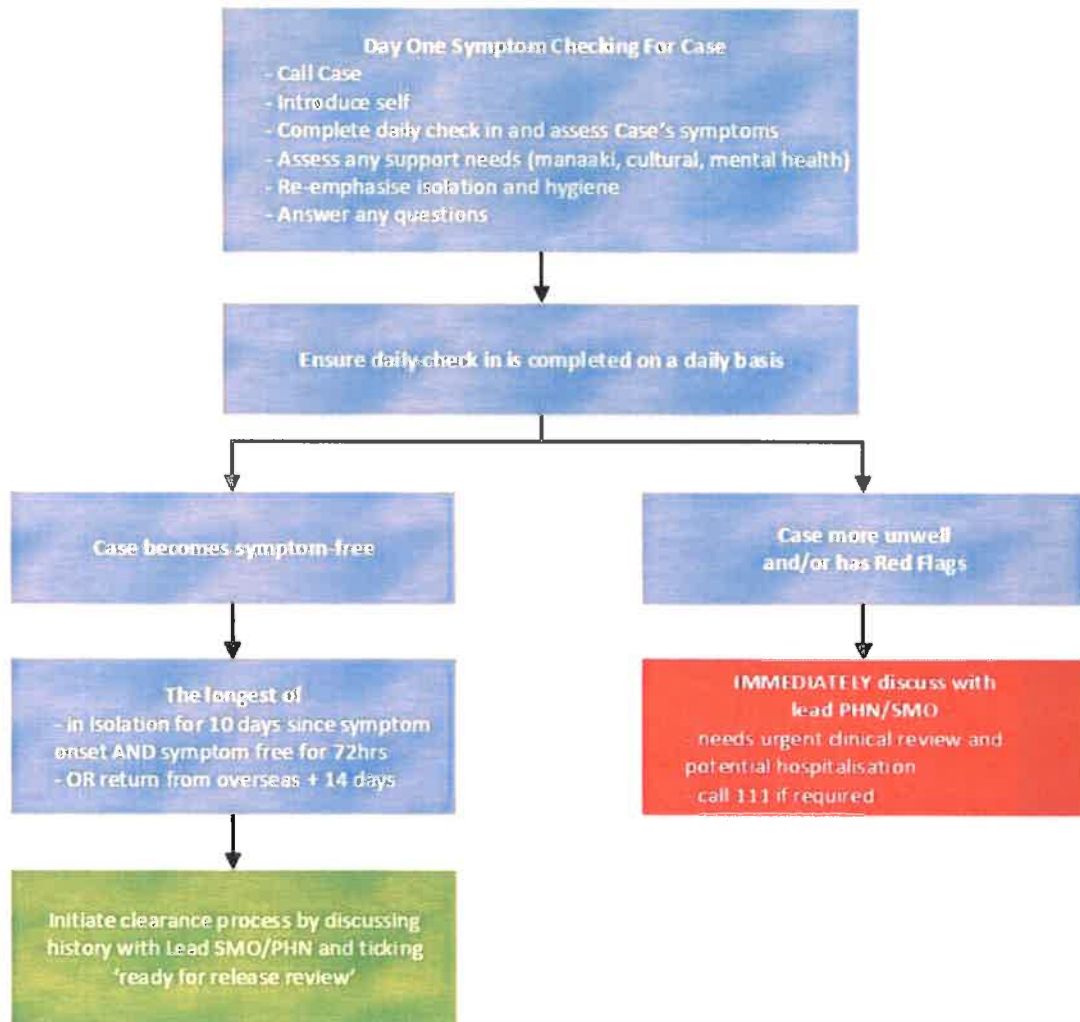


Figure 2 Case Symptom checking process

|               |  |             |                   |
|---------------|--|-------------|-------------------|
| Authored date | 15 February 2021                                   | Review date | 1 March 2021      |
| Owner         | COVID-19 clinical lead COVID response unit manager | Version     | Working Draft 3.4 |

# COVID-19 Operations

## Standard Operating Procedure (SOP)

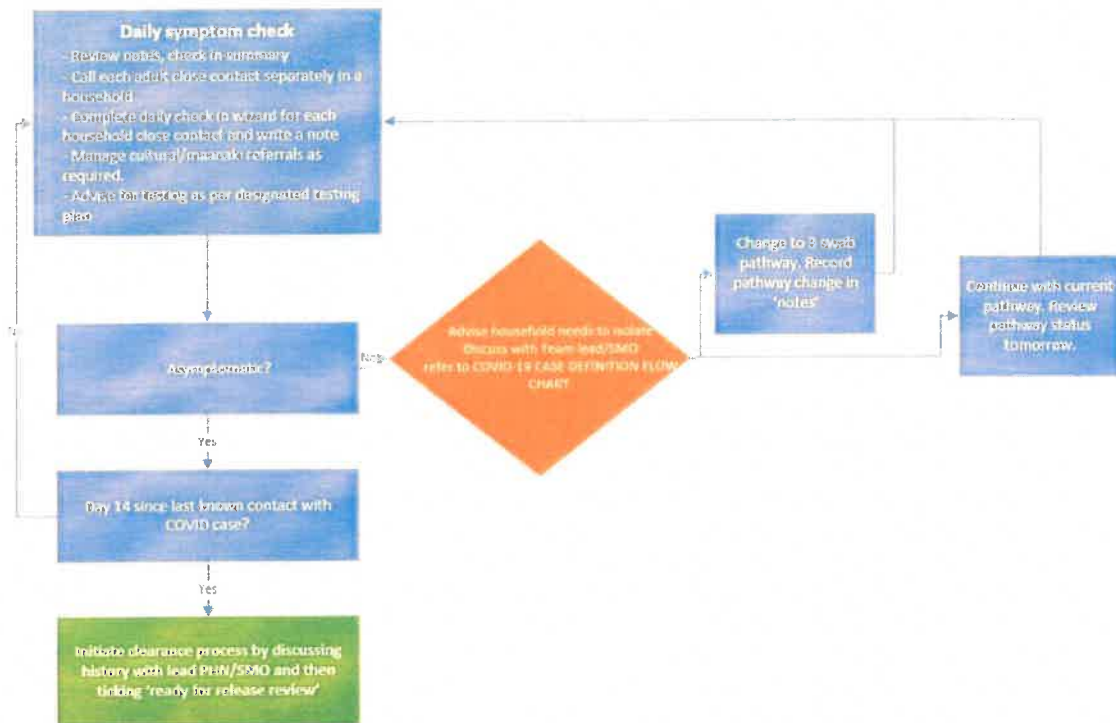


Figure 3 Close contact symptom checking process

### Managing close contacts who develop symptoms (refer figure 3 and figure 4)

1. When symptoms are identified in a close contact during a daily check in, these should be documented within the 'daily check in' wizard. Anyone who requires review by a medical officer must have the 'review required' box ticked within the 'current symptoms' section checked. This will trigger the 'symptomatic close contact Q and A', within which the Team Lead SMO can record their decision to advance the contact to case under investigation (if this is required). Symptomatic close contacts require assessment by an SMO to determine whether additional testing is required to confirm their status. N.B. In most cases, where there is *no* need to consider early follow up of exposure events or contacts, the symptomatic contact should remain in follow up within the close contact follow up record.
2. While a test result is being processed the symptomatic close contacts are asked to isolate themselves at home, away from other household members. Household members are required to quarantine until the close contact returns 1 negative test.
3. If the test result is positive, the close contact is deemed a CONFIRMED case and the case needs to be interviewed/scoped as per ARPHS usual process.
4. If the test result is negative the contact enters the 3 swab pathway, consisting of 2 further swabs 48 hours apart.

|               |  |             |                   |
|---------------|--|-------------|-------------------|
| Authored date | 15 February 2021                                   | Review date | 1 March 2021      |
| Owner         | COVID-19 clinical lead COVID response unit manager | Version     | Working Draft 3.4 |

# COVID-19 Operations Standard Operating Procedure (SOP)



Figure 4 Management of people with a COVID-like illness



| Authorised date                                    | Review date       |
|--|-------------------|
| 15 January 2021                                    | 8 January 2021    |
| Owner  | Version           |
| COVID-19 clinical lead COVID response unit manager | Working Draft 3.1 |

# COVID-19 Operations

## Standard Operating Procedure (SOP)

### Contacts advanced to Confirmed/ Probable cases

1. Due to the increased testing of symptomatic close contacts, ‘probable’ cases should be rare and only designated as such in discussion with the operations SMO.
2. ‘Probable’ cases should have the symptomatic close contact Q and A completed with this decision. Close contact records should be closed due to being advanced to case.
3. The new confirmed or probable case is linked in EpiSurv as having an epi-link to the Index confirmed case.
4. If the contact is being symptom checked by the symptom checking team, the confirmed or probable case is handed to the ops team to be allocated to a CCM team for interview/scope.
5. Any other household close contacts will need to be informed that their 14 day self-isolation (quarantine) period is subject to change and public health will keep them informed. Daily symptom checking continues for the remaining household close contacts.
6. Information about the new confirmed or probable case, interview/scope, discussion with GP, and further contacts (if any) is documented in the new confirmed or probable COVID contact tracing case record and the close contact follow up record is closed due to being advanced to case.

### Clearing Cases (see figure 5)

The CCM team member identifies a case as being ready for a release decision, by meeting the Ministry of [Health guideline criteria](#). Currently, cases can be released from isolation when the following criteria are met:

- There has been resolution of all symptoms of the acute illness for the previous 72 hours. AND
- (non-hospitalised) 10 days have passed since symptom onset.

OR

- (hospitalised) 10 days have passed since hospital discharge AND they do NOT have major immunosuppression (e.g. bone marrow transplant within 12/12 or receiving chemotherapy)

OR

- (asymptomatic for the whole period) 10 days have passed since positive test result.
  1. **Calculating release date.** The day that the case’s symptoms develop is considered Day 0 (as is the day of the positive swab if remains asymptomatic) and they can be released from isolation on the morning of Day 11 if they have been symptom-free for at least 72 hours. It

|               |  |             |                   |
|---------------|--|-------------|-------------------|
| Authored date | 15 February 2021                                   | Review date | 1 March 2021      |
| Owner         | COVID-19 clinical lead COVID response unit manager | Version     | Working Draft 3.4 |

# COVID-19 Operations

## Standard Operating Procedure (SOP)

should be discussed with the Lead SMO before cases are informed that they are released from isolation.

- 2. Release from Jet Park process.** In order to release the case from Jet Park quarantine facility, the CCM team should notify the ARPHS Jet Park liaison by populating the 'release from Jet Park' table found in [the case and contact management toolkit](#) and emailing to the ARPHS Jet Park liaison email address. This should be completed on the day *before* the pending release is anticipated. Cases will require one further symptom check on the day of release to confirm. The Jet Park medical liaison must be informed of the outcome of this symptom check and the clearance letter attached. Refer to the [Encouraging people to isolate or quarantine at Jet Park SOP](#) for more information.
- 3. Supplying clearance letters.** Clearance letters found in the [case and contact management toolkit](#) are populated with correct details and provided by email (in PDF form) to the case and clearly documented with the date recovered. The email should be saved in the follow up record 'file' section. Symptom checker ticks the 'ready for release review' box.
- 4. SMO Lead review.** The Lead SMO identifies those ready to be released by reviewing those managed by their team in the 'ready for release review' list. SMO Lead completes the Release Decision Q&A wizard on the date recovered, writes an MO note assigns to and notifies SSOs.

### Notes

1. Probable cases need to be advised to be alert for symptoms until 14 days from their last exposure to a known case have passed. Although it is very likely they have had COVID-19, it isn't guaranteed. If symptoms develop within the 14 days they will need to be retested for COVID-19 and go into isolation while awaiting results.
2. For some high-risk groups an email to the case's workplace is required upon release from isolation. See below SOPs in [the SOP library](#)
  - a. [Process for managing cases identified on Air NZ flights SOP](#)
  - b. [DHB staff or patient as a case SOP](#).

Authored date

15 February 2021

Review date

1 March 2021

Owner

COVID-19 clinical lead COVID  
response unit manager

Version

Working Draft 3.4

# COVID-19 Operations

## Standard Operating Procedure (SOP)

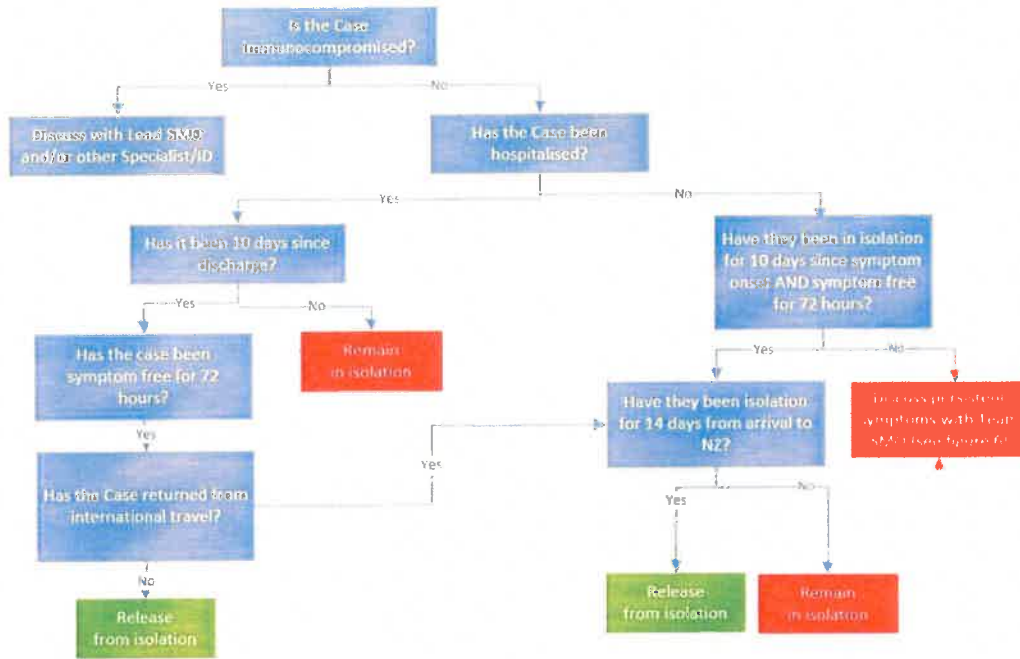


Figure 5 Releasing Cases from isolation

### Releasing cases with persistent symptoms

Use the following decision tree for cases with persistent symptoms at Day 13. This approach attempts to marry up Ministry of Health guidance on clearance with ARPHS experience and evidence. Rationale for starting assessment on Day 13 is to give some time for symptoms to resolve after Day 10 (otherwise the “AND symptom-free for 72 hours” guideline would be made redundant).

|               |  |             |                   |
|---------------|--|-------------|-------------------|
| Authored date | 15 February 2021                                   | Review date | 1 March 2021      |
| Owner         | COVID-19 clinical lead COVID response unit manager | Version     | Working Draft 3.4 |

# COVID-19 Operations

## Standard Operating Procedure (SOP)

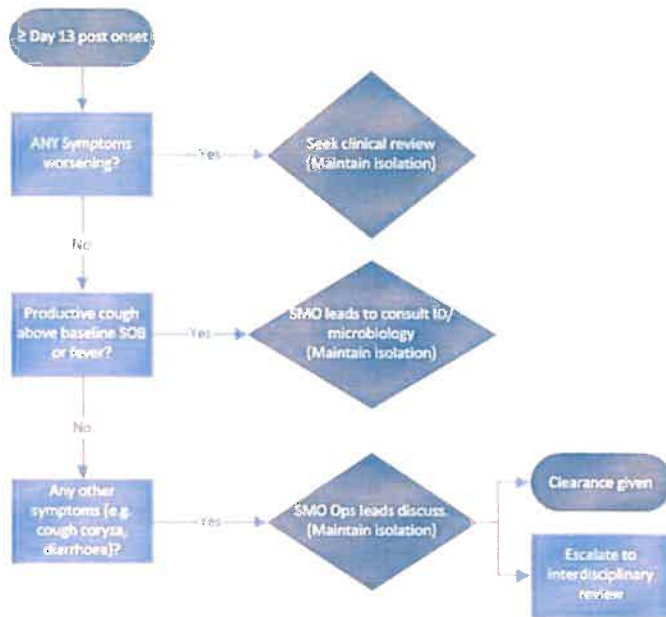


Figure 6 Releasing cases from isolation with persistent symptoms

### Clearing Close Contact process

Symptom checking team member identifies close contact as being ready for release decision as meeting the following criteria (See documents in [case and contact management toolkit](#) to help identify key factors for clearance):

- 13 days have passed since last known contact with COVID case (i.e. today is day 14).
- They are symptom free.
- They have had their day 12 swab taken (discuss with team lead SMO if not done).

There are no other household close contacts with symptoms of COVID-19.

Note: Day 0 is the date of last known contact with COVID case and close contacts can be released from quarantine on the morning of Day 15 if they remain symptom-free. See Figure 6 below.

1. **Calculating release date.** Symptom checker discusses close contact’s history with Team Lead SMO prior to completing the day 14 check-in and ascertains whether the contact could be cleared if symptom-free today. Symptom checker undertakes the day 14 daily check in and if

|               |  |             |                   |
|---------------|--|-------------|-------------------|
| Authored date | 15 February 2021                                   | Review date | 1 March 2021      |
| Owner         | COVID-19 clinical lead COVID response unit manager | Version     | Working Draft 3.4 |



# COVID-19 Operations

## Standard Operating Procedure (SOP)

asymptomatic advises that they can be released from quarantine/isolation *if* the close contact remains symptom free until the next day.

2. **Release from Jet Park process.** For close contacts isolating at Jet Park the team should notify the ARPHS Jet Park liaison by populating the 'release from Jet Park' table found in [the case and contact management toolkit](#) and emailing to the ARPHS Jet Park liaison email address by 2pm on day 14. Close contacts should be advised that their discharge time cannot be guaranteed as it relies on Jet Park transport. Please see (See [Encouraging cases and contacts to isolate/quarantine at Jet Park Quarantine Facility](#) in [the SOP library](#) for more information)
3. **Supplying clearance letters.** Clearance letters found in the [case and contact management toolkit](#) are populated with correct details and provided by email (in PDF form) to the close contact and clearly documented with tomorrow's date as the clearance date. The email is saved in the follow up record 'file' section. Close contacts are informed to call HealthLine or their GP for advice if they develop any new symptoms. Symptom checker ticks the 'ready for release review' box.
4. **Team Lead review** The Team Lead/Lead SMO identifies those ready to be released by reviewing those managed by their team in the 'ready for release review' list. Lead PHN completes the Release Decision Q&A Wizard on day 15.

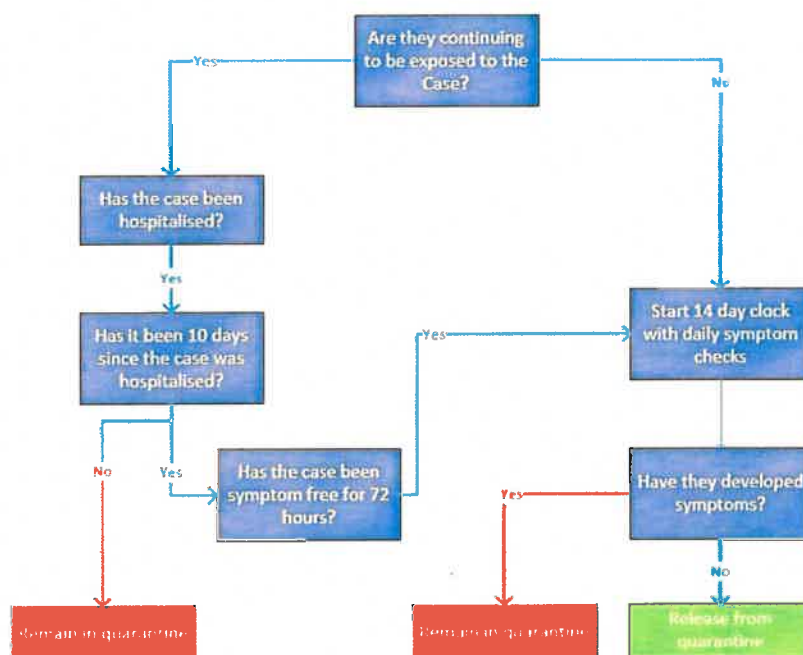


Figure 7 Releasing close contacts from quarantine

|               |  |             |                   |
|---------------|--|-------------|-------------------|
| Authored date | 15 February 2021                                   | Review date | 1 March 2021      |
| Owner         | COVID-19 clinical lead COVID response unit manager | Version     | Working Draft 3.4 |

# COVID-19 Operations

## Standard Operating Procedure (SOP)

### When and how to escalate an issue

Any issues are escalated to the Operations Manager and/or SMO Operations Lead (via request to ARPHS Emergency Operations [arphsops@adhb.govt.nz](mailto:arphsops@adhb.govt.nz)).

### Glossary of terms

|          |  |
|----------|--|
| ARPHS    | Auckland Regional Public Health Service                              |
| CCM      | Case and Contact Management  |
| DHB      | District Health Board  |
| HIS      | High index of suspicion  |
| MIQF/MIF | Managed isolation and quarantine facility/Managed isolation facility |
| NCTS     | National Contact Tracing Solution                                    |
| NITC     | National Investigation and Tracing Centre                            |
| SMO      | Senior Medical Officer   |
| SOP      | Standard Operating Procedures  |
| SPOC     | Single Point of Contact  |

|                |  |             |                   |
|----------------|--|-------------|-------------------|
| Authoring date | 15 February 2021                                   | Review date | 1 March 2021      |
| Owner          | COVID-19 clinical lead COVID response unit manager | Version     | Working Draft 3.4 |

**Casual plus letter for students (not in classes with case)**



14 February 2021

Dear Parent or Guardian

**COVID-19 case at Papatoetoe High School**

A student at Papatoetoe High School has been confirmed as having COVID-19.

Your child has **not** been identified as a close contact and so is at low risk of becoming ill with the disease. However, as a precautionary measure, the school will be closed for the next two days – Monday 15 and Tuesday 16 February.

**What you need to do**

While there is only a small possibility of your child becoming unwell, we are asking that they stay at home and get tested for COVID-19. A mobile testing unit will be on-site at the school tomorrow. The test is free.

Please take the following code with you and give it to the testing staff. This is a unique code and should not be shared with anyone else:

- **SURV-TM11SC1**

Alternatively, you can visit one of the community testing centres to get tested today (see table below). A list of testing sites is also available on the Auckland Regional [Public Health Service website](https://www.arphs.health.nz/public-health-topics/covid-19/where-to-get-tested/): <https://www.arphs.health.nz/public-health-topics/covid-19/where-to-get-tested/>.

Please keep your child at home until they have returned a negative test result. You will receive this via text. In the unlikely event their result is positive, Public Health will be in contact with advice about what to do next.

**Watch for COVID-19 symptoms**

Please watch for the symptoms of COVID-19:

- New or worsening cough
- Fever
- Sore throat
- Temporary loss of smell or taste
- Difficulty breathing
- Runny nose. An [information sheet for casual contacts](#) is available on the [ARPHS website](#).

**If your child or anyone else in your household becomes unwell, please phone the 24-hour COVID-19 Health line number 0800 358 5453. Tell them your child is a casual-plus contact of COVID-19;**

they will advise you what to do. Please do not take your child to a medical or after hours clinic, but you can phone your medical clinic if you need further advice.

If your child has a weakened immune system (e.g. if they have an inherited immune problem or are receiving chemotherapy for cancer or similar), please contact your doctor immediately to discuss further.

For more information and fact sheets, visit the [COVID-19 page on www.arphs.health.nz](https://www.arphs.health.nz). Please phone Healthline on 0800 358 5453 if you have any queries around health or isolation.

We will update you with any new or different information or advice, if required, as our investigation continues.

Finally, if you know the identity of the case, please do not share this via personal networks, or social or other media; this can lead to online bullying and harassment.

Thank you for your help

Medical Officer of Health  
Auckland Regional Public Health Service

| Location | Centre Name  | Operating Hours   | Referral Process   |
|----------|--|---|--------------------|
| NORTH    | <b>NORTHCOTE COMMUNITY TESTING CENTRE</b><br>16-18 College Road, Northcote. Corner of College Road and Kilham Avenue.<br>Entrance via College Rd | <b>Sun 14<sup>th</sup> Feb</b><br>8:30am – 6:00pm<br><b>Mon 15<sup>th</sup> to Fri 19<sup>th</sup> Feb</b><br>8:30am – 4:30pm<br><b>Sat 20<sup>th</sup> Feb</b> 8:30am – 2:30pm | Walk-In/Drive Thru |
| CENTRAL  | <b>BALMORAL COMMUNITY TESTING CENTRE</b><br>182 Balmoral Road, Mount Eden, Auckland 1024   | <b>Sun 14<sup>th</sup> Feb</b><br>8:30am – 6:00pm<br><b>Mon 15<sup>th</sup> to Fri 19<sup>th</sup> Feb</b><br>8:30am – 4:30pm<br><b>Sat 20<sup>th</sup> Feb</b> 8:30am – 2:30pm |                    |
| WEST     | <b>WHĀNAU HOUSE, WAIPAREIRA TRUST HENDERSON</b><br>Corner of Edsel St & Catherine St, Henderson  | <b>Sun 14<sup>th</sup> Feb</b><br>8:00am – 4:00pm (or later if needed)<br><b>Mon 15<sup>th</sup> to Fri 19<sup>th</sup> Feb</b><br>8:00am – 4:00pm                              |                    |
| WEST     | <b>HEALTH NEW LYNN</b><br>Level 1 Carpark, Totara Health Services, McCrae Way, New Lynn  | <b>Mon 15<sup>th</sup> to Fri 19<sup>th</sup> Feb</b><br>8:30am – 4:30pm<br><b>Sat 20<sup>th</sup> to Sun 21<sup>st</sup> Feb</b><br>CLOSED                                     |                    |
| SOUTH    | <b>THE WHĀNAU ORA COMMUNITY CLINIC</b><br>25 Druces Road, Wiri   | <b>Sun 14<sup>th</sup> Feb</b><br>1:00pm – 6:00pm<br><b>Mon 15<sup>th</sup> to Fri 19<sup>th</sup> Feb</b><br>8:30am – 4:30pm<br><b>Sat 20<sup>th</sup> Feb</b> 8:30am – 2:30pm |                    |
| SOUTH    | <b>ŌTARA COMMUNITY TESTING CENTRE</b><br>Otarā Town Centre, 14 Fair Mall, Otara  | <b>Sun 14<sup>th</sup> Feb</b><br>10:00am – 6:00pm<br><b>Mon 15<sup>th</sup> to Fri 19<sup>th</sup> Feb</b><br>8:30am – 4:00pm<br><b>Sat 20<sup>th</sup> Feb</b><br>CLOSED      |                    |



17 February 2021

Dear Parent, Student and Staff Member

### **Two COVID-19 cases at Papatoetoe High School**

The two new cases of COVID-19 are Papatoetoe High School students from the same family, with one student in the same class as the case from Sunday. The school will now be closed until Monday 22 February 2021.

With two more cases, Public Health asks that **all students and staff are tested and must have a negative test result before they return to school on Monday.**

**Siblings of students and children of staff who attend other schools should also remain at home until Monday.**

Students and staff who are close contacts must remain at home in self-isolation, and their household members need to get tested (see Close Contact advice below).

**Everyone in the school community – staff, students and household members – is asked to get a test, if they have not been tested since Feb 15.**

A testing centre will be operating at the school on Saturday and Sunday. Testing is also available at other community testing centres in the area for anyone who needs to get tested – students, staff and household members. For information on testing locations in Auckland, visit [www.arphs.health.nz/covid19test](http://www.arphs.health.nz/covid19test).

**Please show this code when you get tested - SURV-TM11SC1.**

**All staff, students and household members who are not close contacts also need to take action:**

- Everyone (including household members) is encouraged to stay home until Monday
- Students and staff cannot return to school unless they have had a negative test result.
- Siblings of students and children of staff should not attend school and Early Learning Services until Monday.
- All household members should work from home if they can.
- This also means that everyone in the school community is asked not attend large gatherings until Monday.
- All household members of all students and staff should be tested if they have not been tested since 15 February

- Do not attend school at any time if you are unwell. Please stay home if you develop any symptoms, and call Healthline on 0800 358 5453 and get tested again.
- If any household members are unwell or have COVID-19 symptoms, we ask that they stay home and get tested.

#### Close contacts

#### If you or your child has been told they are a close contact:

- Please have your second COVID-19 test and stay in self-isolation until 24 February, according to the advice given by Public Health.
- We now ask **all household members of close contacts to also have a test as soon as possible**, if they have not already had a test since 15 February. They need to stay in self-isolation until they receive a negative test result.
- **All household members with any symptoms** should call Healthline on 0800 358 5453 immediately, and they should stay at home, even if they have had a negative test result.

We realise that getting tested and staying away from work, school or large gatherings is inconvenient for everyone in the school community.

However, it is vital that everyone is tested on the weekend at the school if they have not already been tested to ensure there are no further cases of COVID-19 in the school community.

#### Everyone should watch for the symptoms of COVID-19

- New or worsening cough
- Fever
- Sore throat
- Temporary loss of smell or taste
- Difficulty breathing
- Runny nose.

**If your child or anyone else in your household becomes unwell, please phone the 24-hour COVID-19 Health line number 0800 358 5453 and they will advise you what to do.**

Public Health has more information and fact sheets, visit the [COVID-19 page on www.arphs.health.nz](https://www.arphs.health.nz).

Nga mihi

Thank you for your help

Medical Officer of Health  
Auckland Regional Public Health Service



19 February 2021

Dear Parent or Guardian,

**Your child needs a negative COVID-19 test result before returning to school on Monday**

Papatoetoe High School will reopen on Monday, February 22. However, all students must have returned a negative COVID-19 test result *before* they can return to school.

**What you need to do**

**If your child hasn't been tested yet, or was tested before February 15\***, this is a friendly reminder that testing is needed, and will be available at the school this weekend.

We are also encouraging whānau who live with Papatoetoe High students to get tested if they haven't already, or were tested before February 15\*.

**Where to go**

**What:** COVID-19 testing - FREE

**Where:** Papatoetoe High School

**When:** **This weekend - Saturday (9am – 5pm) and Sunday from (9am to 3pm)**

**Take:** The following code with you and give it to the testing staff when your child/your whānau go for testing: **SURV-TM11SC1**. *This is a unique code, please do not share it outside of the school community.*

*\*Testing before February 15 would have been too early to pick up the virus if your child or whānau member was developing it. That's why it's important that anyone tested before February 15 gets a second test this weekend.*

Testing is also available at other Community Testing Centres. Check their locations and weekend opening times here: <https://www.arphs.health.nz/covid19test>, or call Healthline: 0800 358 5453.

Negative test results will be sent via txt or, in the unlikely event of a positive result, Public Health will call you. Please be sure to have a working mobile number you can give to testing staff.

If you have already been contacted by Public Health, have received the above information, and your child has already had a COVID-19 test on or after February 15, you do not need to do anything further at this time.

We wish you all the best for your return to school.

Thank you for your help

Medical Officer of Health  
Auckland Regional Public Health Service



23 February 2021

Dear Parent, Student and Staff Member

**One new COVID-19 case at Papatoetoe High School**

Another student has tested positive for COVID-19 this morning so the school will close this evening, until further notice.

**The Ministry of Health is requiring everyone in the school community – students, staff, students' brothers and sisters and all household members – to stay at home.**

**Students and staff who got tested BEFORE yesterday, MON 22 FEB, are asked to get tested again.**

Everyone in a Papatoetoe High School household needs to remain at home until all students and staff members have had a negative result from a test taken this week.

This means that everyone in a Papatoetoe school household must stay away from work or any other school, educational facility or community setting (e.g. the supermarket or any other place outside the home), until all the students or staff members in their household have had a negative test result.

Household members who are not students or staff do not need to be retested, unless they have symptoms.

**Students and staff will need to have a negative test result from a test taken on or after Monday 22 February before they can attend school. There will be further information on when the school will reopen.**

There will be testing at the school this week, or you can go to a community testing centre. For information on testing locations in Auckland, visit [www.arphs.health.nz/covid19test](http://www.arphs.health.nz/covid19test).

Please give the staff this code when you go for testing: **SURV-TM11SC1**.

**Any students, staff and household members with any symptoms** should call Healthline on 0800 358 5453 immediately for advice, and stay at home, even if they have had a negative test result.

**Everyone should watch for the symptoms of COVID-19. These can include one or more of the following:**

- New or worsening cough
- Fever
- Sore throat
- Temporary loss of smell or taste
- Difficulty breathing
- Runny nose.



Public Health has more information and fact sheets; visit the [COVID-19 page on www.arphs.health.nz](https://www.arphs.health.nz).

Thank you for your support in getting tested and staying home.

Medical Officer of Health  
**Auckland Regional Public Health Service**



24 February 2021

Dear Parent or Guardian

**All students need to have a COVID-19 test taken any day this week**

**This is a friendly reminder that students need to get retested, even if they had a test last week.**

With one more school case announced yesterday and two more whānau with COVID-19, we need to reduce the possibility that any students return to school with COVID-19.

The school is closed this week and we will confirm when the school will reopen later this week. The students will have received texts about the need to stay at home until they have a negative test result. They should be following this advice.

**What you need to do**

**If your child hasn't been tested on or after Monday 22 February, please send them to be tested for free at:**

- **Papatoetoe High School – 9-3pm**
- **or a Community Testing Centre – see the locations and times here - <https://www.arphs.health.nz/covid19test>, or call Healthline: 0800 358 5453.**  
Your child should take this code when getting tested: **SURV-TM11SC1**.  
*This is a unique code, please do not share it outside of the school community.*

If your child has already had a test this week (on or after 22 February), you do not need to do anything further at this time. When they receive their negative result you are all free to resume normal life.

We realise this has been very hard for the Papatoetoe High School community, and want to thank you for your support with following our public health advice.

Thank you again for your help

Kia pai koe tō mahi

Medical Officer of Health  
Auckland Regional Public Health Service



